

Hard Jaw

Power Chuck Hard Jaw



Application / Benefits

Works with HC.

Fig. 1

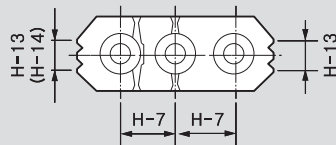


Fig. 2

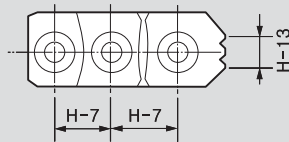
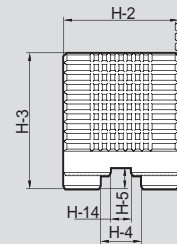
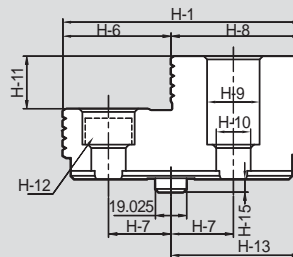
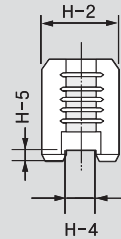
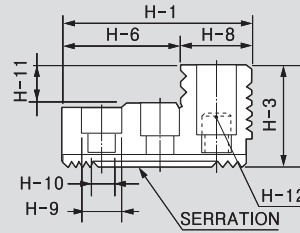
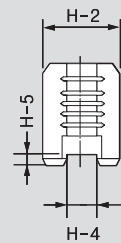
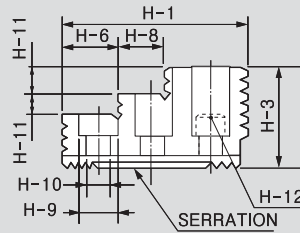
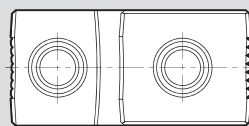


Fig. 3



※ See the product dimension Table on the right.

DIMENSIONS

	HB04N1	HB06A1	HB08A1	HB10A1	HB12B1	HB12N1	HB15A1	HB15A2
Fig.	2	1	1	1	2	2	1	1
Serration Pitch	1.5x60°	1.5x60°	1.5x60°	1.5x60°	1.5x60°	1.5x60°	1.5x60°	3.0x60°
H-1	53	67	86	99.5	97.5	103	149	149
H-2	23	31	35	40	50	50	62	62
H-3	27.5	41	51	54	55	52	86	86
H-4	10	12	14	16	18	21	22	22
H-5	4	5	5	5	5	4	9	9
H-6	30.5	18	31	43	64.5	62.5	63	63
H-7	14	20	25	30	30	30	43	50
H-8	22.5	17	18	17	33	40.5	34	34
H-9	13.5	17	19	19	22	25	32	32
H-10	8.5	11	13	13	15	17	21	21
H-11	10	9	12	13	20	17	20	20
H-12	M8	M10	M12	M12	M14	M16	M20	M20
H-13	6	10	12	15	18	30	40	40
H-14	-	10	12	15	-	-	40	40
H-15	-	-	-	-	-	-	-	-
Corresponding	HS-04, HS-05	HC/HCH/HS-06, MH-206, UR-175	HC/HCH/HS-08, MH-208, UR-210	HC/HCH/HS-10, MH-210, UR-250	HC/HCH-12	HS-12, MH-212 UR-315	HCH-15, HCH-18	MH-218

	HB15N1	HB18B2	HB32B2	HB32GB	HB32SB2	HB40GB	HB40SB2	-
Fig.	1	2	2	3	2	3	2	-
Serration Pitch	1.5x60°	3.0x60°	3.0x60°	-	3.0x60°	-	3.0x60°	-
H-1	149	159.5	150	150	168	223	223	-
H-2	62	80	70	70	70	80	80	-
H-3	86	90	75	83	75	124	117	-
H-4	25.5	25	25.5	25	25.5	30	30	-
H-5	5	9	7	13	7.5	15	8	-
H-6	69	104.5	66	66	89	133	133	-
H-7	43	50	76.2	38.1	38.1	38.1	114.3	-
H-8	27	55	79	79	79	90	90	-
H-9	32	32	32	32	32	39	39	-
H-10	21	21	21	21	21	26	26	-
H-11	20	40	32	32	32	55	55	-
H-12	M20	M20	M20	M20	M20	M24	M24	-
H-13	43	55	-	79	-	83	-	-
H-14	38	-	-	12.7	-	-	-	-
H-15	-	-	-	8	-	7	-	-
Corresponding	HC-15, HC-18	HC/HCH-21, HC/HCH-24, MH-221,224	HCH-32 [Serration]	HC-32 [Groove]	HC-32 [Serration]	HC-40[Groove] 50,55,63,70,80	HC-40[Serration] 50,55,63,70,80	-